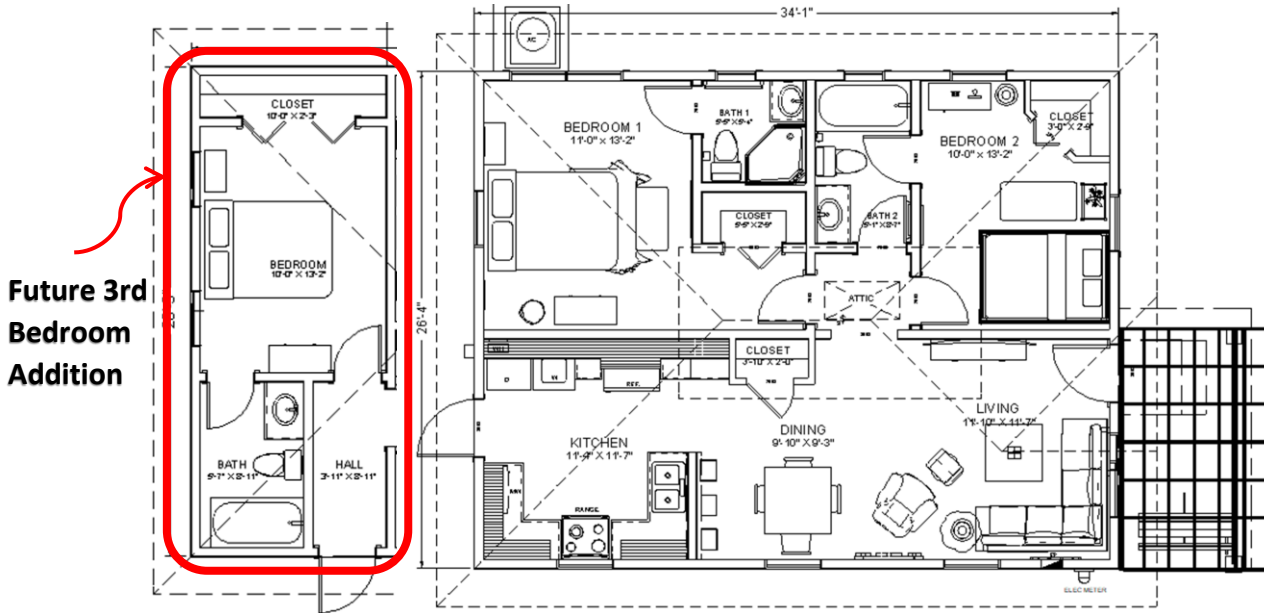




Ph: 916-0549

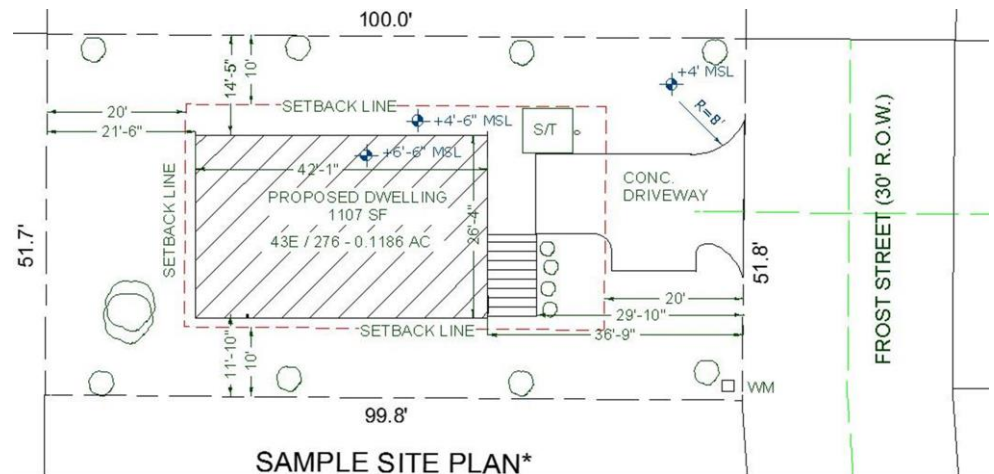
E: Bellegardens@candw.ky

**4 Color Choices**



**Future 3rd Bedroom Addition**

**2 Bed Rm - 2 Bath, 894 SF, \$195,000**





Ph: 916-0549

E: Bellegardens@candw.ky

## **Standard Specifications for Finishes**

Exterior Walls	6" reinforced concrete block with cement render and Textured Finish
Interior Walls	4" Stud framed interior walls, Painted finish to sheetrock with knockdown. Bathroom tiled with ceramic tiles to tub / shower area and 4' high on walls elsewhere
Ceilings	1 1/2' sheetrock with fine sprays or 'Knock-down', painted finish
Floor	5" reinforced concrete slab with ceramic tile finish throughout
Roof	Pressure treated pre-manufactured wood trusses fastened with appropriate hurricane straps. 5/8" CDX plywood deck with water shield, finished with regular 3 tab Asphalt shingles
Windows	Single hung, white, aluminum windows
Doors	Front Entrance – Decorative door, pre-hung Rear Door - Solid door, pre-hung Interior Doors - Hollow Core, pre-hung Closet Doors - Bi-folds
Door Locks	Entrance doors to have keyed entry lock sets with deadbolt. Interior doors to have bed / bath knobs, silver in color
Cabinets	Bathroom and Kitchen cabinets to be wood type.
Shelving	Closet Maid wire shelf and rod system
Plumbing Fixtures	Standard Elongated Toilets, 5' Standard tubs, Oval Drop in Basin, Double Bowl Kitchen Sink with strainers and Faucet, Bathroom shower valve and sink faucets
Light Fixtures	4' fluorescent fixtures to kitchen, 2 light flush mount ceiling fixtures in other areas. 2 light bath vanity fixtures, 1 light wall mounted fixtures at entries. 2 light eave fixtures
Air Conditioning	13 Seer, 1 zone Air conditioning system, air Handler mounted in attic with condenser unit mounted to slab on exterior. Radiant R roof Insulation and Batt insulation in stud walls.
Appliances	Refrigerator, Washer and Dryer side by side, Electric Stove w/oven, Microwave